

**TLX  
IMPLANT**

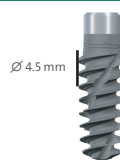
**NT (Narrow TorcFit™)**

∅ 3.75 mm 

∅ 4.5 mm 




∅ 3.75 mm



∅ 4.5 mm

<b>6 mm</b>	035.3006S	<b>6 mm</b>	035.3406S
<b>8 mm</b>	035.3008S	<b>8 mm</b>	035.3408S
<b>10 mm</b>	035.3010S	<b>10 mm</b>	035.3410S
<b>12 mm</b>	035.3012S	<b>12 mm</b>	035.3412S
<b>14 mm</b>	035.3014S	<b>14 mm</b>	035.3414S
<b>16 mm</b>	035.3016S	<b>16 mm</b>	035.3416S
<b>18 mm</b>	035.3018S	<b>18 mm</b>	035.3418S

**RT (Regular TorcFit™)**

∅ 3.75 mm 

∅ 4.5 mm 




∅ 3.75 mm




∅ 4.5 mm

<b>6 mm</b>	035.3106S	<b>6 mm</b>	035.3506S
<b>8 mm</b>	035.3108S	<b>8 mm</b>	035.3508S
<b>10 mm</b>	035.3110S	<b>10 mm</b>	035.3510S
<b>12 mm</b>	035.3112S	<b>12 mm</b>	035.3512S
<b>14 mm</b>	035.3114S	<b>14 mm</b>	035.3514S
<b>16 mm</b>	035.3116S	<b>16 mm</b>	035.3516S
<b>18 mm</b>	035.3118S	<b>18 mm</b>	035.3518S

**WT (Wide TorcFit™)**

∅ 5.5 mm 

∅ 6.5 mm 




∅ 5.5 mm




∅ 6.5 mm

<b>6 mm</b>	035.3706S	<b>6 mm</b>	035.3806S
<b>8 mm</b>	035.3708S	<b>8 mm</b>	035.3808S
<b>10 mm</b>	035.3710S	<b>10 mm</b>	035.3810S
<b>12 mm</b>	035.3712S	<b>12 mm</b>	035.3812S
<b>14 mm</b>	–	<b>14 mm</b>	–
<b>16 mm</b>	–	<b>16 mm</b>	–
<b>18 mm</b>	–	<b>18 mm</b>	–

**TLC  
IMPLANT**

∅ 3.3 mm 

∅ 3.75 mm 





∅ 3.3 mm




∅ 3.75 mm

<b>6 mm</b>	–	<b>6 mm</b>	035.7206S
<b>8 mm</b>	035.7008S	<b>8 mm</b>	035.7208S
<b>10 mm</b>	035.7010S	<b>10 mm</b>	035.7210S
<b>12 mm</b>	035.7012S	<b>12 mm</b>	035.7212S
<b>14 mm</b>	035.7014S	<b>14 mm</b>	035.7214S
<b>16 mm</b>	035.7016S	<b>16 mm</b>	035.7216S
<b>18 mm</b>	035.7018S	<b>18 mm</b>	035.7218S

∅ 3.3 mm 

∅ 3.75 mm 

∅ 4.5 mm 



∅ 3.3 mm





∅ 3.75 mm




∅ 4.5 mm

<b>6 mm</b>	–	<b>6 mm</b>	035.7306S	<b>6 mm</b>	035.7506S
<b>8 mm</b>	035.7108S	<b>8 mm</b>	035.7308S	<b>8 mm</b>	035.7508S
<b>10 mm</b>	035.7110S	<b>10 mm</b>	035.7310S	<b>10 mm</b>	035.7510S
<b>12 mm</b>	035.7112S	<b>12 mm</b>	035.7312S	<b>12 mm</b>	035.7512S
<b>14 mm</b>	035.7114S	<b>14 mm</b>	035.7314S	<b>14 mm</b>	035.7514S
<b>16 mm</b>	035.7116S	<b>16 mm</b>	035.7316S	<b>16 mm</b>	035.7516S
<b>18 mm</b>	035.7118S	<b>18 mm</b>	035.7318S	<b>18 mm</b>	035.7518S

∅ 4.5 mm 

∅ 5.5 mm 

∅ 6.5 mm 



∅ 4.5 mm



∅ 5.5 mm



∅ 6.5 mm


<b>6 mm</b>	035.7606S	<b>6 mm</b>	035.7706S	<b>6 mm</b>	035.7806S
<b>8 mm</b>	035.7608S	<b>8 mm</b>	035.7708S	<b>8 mm</b>	035.7808S
<b>10 mm</b>	035.7610S	<b>10 mm</b>	035.7710S	<b>10 mm</b>	035.7810S
<b>12 mm</b>	035.7612S	<b>12 mm</b>	035.7712S	<b>12 mm</b>	035.7812S
<b>14 mm</b>	035.7614S	<b>14 mm</b>	035.7714S	<b>14 mm</b>	035.7814S
<b>16 mm</b>	035.7616S	<b>16 mm</b>	035.7716S	<b>16 mm</b>	035.7816S
<b>18 mm</b>	035.7618S	<b>18 mm</b>	–	<b>18 mm</b>	–

**Closure Cap**


NT Closure Cap

		∅ 2.7 mm	∅ 4.0 mm
	<b>H 0 mm</b>	036.3200S	–
	<b>H 1.5 mm</b>	–	036.0201S

RT Closure Cap

		∅ 2.7 mm	∅ 5.5 mm
	<b>H 0 mm</b>	036.3200S	–
	<b>H 1.5 mm</b>	–	036.1201S

WT Closure Cap

		∅ 2.7 mm
	<b>H 0 mm</b>	036.3200S

**Healing Caps**

NT Healing Cap

		∅ 4.0 mm
	<b>H 3.0 mm</b>	036.0203S
	<b>H 4.5 mm</b>	036.0204S

RT Healing Cap

		∅ 5.5 mm
	<b>H 2.0 mm</b>	036.1202S
	<b>H 3.0 mm</b>	036.1203S
	<b>H 4.5 mm</b>	036.1204S

WT Healing Cap

		∅ 7.2 mm
	<b>H 2.0 mm</b>	036.2202S
	<b>H 3.0 mm</b>	036.2203S
	<b>H 4.0 mm</b>	036.2204S

**Auxiliary  
Instruments**



Torque Control Device  
066.1100



Ratchet  
046.119



Bone Profiler for RN/RT, L 28MM  
044.304



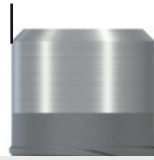
Bone Profiler for WN/WT, L 25MM  
044.305



Guiding Pin for TLX/TLC Implants  
049.406S

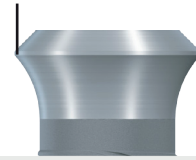
**NT - Narrow TorcFit™**

Ø 3.5 mm



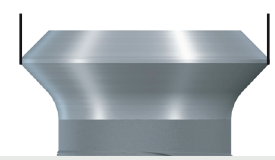
**RT - Regular TorcFit™**

Ø 4.8 mm



**WT - Wide TorcFit™**

Ø 6.5 mm



**Impression Posts  
Analog  
Scanbodies**

Impression Post Open Tray	Impression Post Closed Tray	Implant Analog	Repositionable Analog
036.0000	036.0001	036.0002	036.0100
			036.1102

Impression Post Open Tray	Impression Post Closed Tray	Implant Analog	Repositionable Analog
036.1000	036.1001	036.1002	036.0102
			036.2100

Impression Post Open Tray	Impression Post Closed Tray	Implant Analog	Repositionable Analog
036.2000	036.2001	036.2002	036.1100
			036.2102

**Temporary  
Restorations**

Temporary Abutment, crown	Temporary Abutment, bridge
037.0000	037.0001

Temporary Abutment, crown	Temporary Abutment, bridge
037.1000	037.1001

Temporary Abutment, crown	Temporary Abutment, bridge
037.2000	037.2001

**Variobase®XC**

**NT**

Variobase®XC Crown	Variobase®XC Crown AS	Variobase®XC Bridge/Bar Cylindrical	Variobase®XC Bridge/Bar AS
062.5025	062.5014	062.5003	062.4992

**RT**

Variobase®XC Crown	Variobase®XC Crown AS	Variobase®XC Bridge/Bar Cylindrical	Variobase®XC Bridge/Bar AS
062.5026	062.5015	062.5004	062.4993

**WT**

Variobase®XC Crown	Variobase®XC Crown AS	Variobase®XC Bridge/Bar Cylindrical	Variobase®XC Bridge/Bar AS
062.5027	062.5016	062.5005	062.4994

**Novaloc®**

	1 mm	2 mm	3 mm	4 mm	5 mm	6 mm
0°	037.0500	037.0501	037.0502	037.0503	037.0504	037.0505
15°	—	037.0510	037.0511	037.0512	037.0513	037.0514

	1 mm	2 mm	3 mm	4 mm	5 mm	6 mm
0°	037.1500	037.1501	037.1502	037.1503	037.1504	037.1505
15°	—	037.1510	037.1511	037.1512	037.1513	037.1514

	1 mm	2 mm	3 mm	4 mm	5 mm	6 mm
0°	037.2500	037.2501	037.2502	037.2503	037.2504	037.2505
15°	—	037.2510	037.2511	037.2512	037.2513	037.2514

**NT, RT, WT**

Metal Scanbody	Replacement Screw Variobase®XC, Crown AS	Replacement Screw	Analog (4 pcs)	Processing Package titanium	Impression Cap (4 pcs)
036.3230	036.3111	036.3110	2010.721-NOV	2010.601-NOV	2010.722-NOV

**Auxiliary  
Instruments**

Screwdriver 15mm	Screwdriver 21mm	Screwdriver 27mm	AS Screwdriver 15mm	AS Screwdriver 21mm	AS Screwdriver 27mm
046.400	046.401	046.402	046.786	046.787	046.788